

STUDIO
ONE

—
TOI TŪ

WHAT'S ON

—
JAN - APR 2022

PROGRAMME

1

KIA ORA AND WELCOME
TO STUDIO ONE TOI TŪ.

OUR UNIQUE LINE UP OF FUN
AND FREE CREATIVE EVENTS
THIS SUMMER INCLUDE
EXHIBITIONS, TALKS,
WORKSHOPS, AND COURSES.

JOIN US THIS SUMMER AND
VISIT, CREATE, MAKE
AT STUDIO ONE TOI TŪ.

FIND OUT MORE

The creative precinct at Studio One Toi Tū is a hub for making. At the intersection of arts and community, it is a place to meet, exchange, grow, learn and join a neighbourhood of creative activity at 1 Ponsonby Road.

If you would like to receive details of upcoming events and programmes, like our Facebook page, follow us on Instagram, visit our website or email us to subscribe to our newsletter.

09 376 3221
info@studioone.org.nz
studioone.org.nz

facebook.com/studioonetoitu
instagram.com/StudioOne.ToiTu

#VisitCreateMake
#HirePlayShow
#StudioOneToiTu

LOCATION

—
1 Ponsonby Road
Auckland, New Zealand



CONTENTS

OPEN	P. 8 - 13
SHOW	P. 14 - 21
MAKE	P. 22
—	
ADULTS	
DRAWING & PAINTING	P. 24 - 31
PRINTMAKING	P. 25
CERAMICS	P. 25-29
KINTSUGI	P. 30
EMBROIDERY	P. 31
—	
KIDS AND TEENS	P. 32 - 37
—	
HIRE	P. 39

HIRE, PLAY, SHOW



VISIT, CREATE, MAKE

With opportunities for individuals and community groups through to experienced professionals, we offer a range of studio spaces for hire, offering you a place to workshop an idea, learn a new technique or sharpen your skills.

Become a part of the creative community at Studio One Toi Tū by applying to be a part of our exhibition programme or hiring our spaces for your next event.

STUDIO SPACES

We have a range of studio options and are one of the few precincts in Auckland to offer access to 'messy' workshops suitable for ceramicists, sculptors and object makers. We also offer a number of open studio spaces that can be hired individually or collectively for making, meetings, workshops or temporary events.

We are located in the heart of central Auckland with free wi-fi, kitchen facilities and the possibility for 24-hour access. Contact us to find out how we can support you.

THE CELL BLOCK

The Cell Block studio spaces are private studios available for hire at a rate of \$78 per week. It comes with 24-hour access and is hired on a monthly basis.

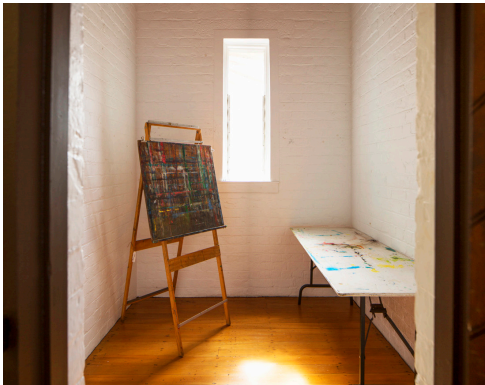
VILLA STUDIO

A shared studio space with access to the sculpture workshop and prep room is available for hire at a rate of \$175 per week. It comes with 24-hour access and is hired on a monthly basis.

WORKSHOP HIRE

Studio One Toi Tū has two 'messy' workshops that can be hired at an hourly rate with access to our ceramic and printmaking equipment. If you have a project and need that extra space to make it happen, this is the option for you.

Contact Studio One Toi Tū to find out more information and check the availability of our studios, gallery and spaces for hire.



CALL FOR TUTORS PROPOSALS

Studio One Toi Tū welcomes new and engaging course and workshop proposals from all creative disciplines, ranging from drawing, taxidermy, weaving and printmaking. Courses and workshops can be aimed at adults, youth or proposed as part of our school holiday programme.

Successful tutors are supported through resources available at Studio One Toi Tū, including the use of fit-for-purpose studios and workshop rooms.

CALL FOR EXHIBITION PROPOSALS

Studio One Toi Tū welcomes innovative approaches to creative practice and offers opportunities for you to be a part of our diverse exhibition programme. Our four ground floor galleries can accommodate various visual art practices such as installation, sculpture, painting, photography and textiles.

Exhibitions are selected through an annual call for proposals via an online application form.

Contact us for more information.



EMMA SAVAGE, 2021

OPEN



CREATIVE TALKS, POP-UPS AND EVENTS



MAKE IT HAPPEN HERE

From creative conversations to pop-up exhibitions, there's always something happening at 1 Ponsonby Road. If you require a studio for a project or workshop, would like to showcase your work or are in need of a venue to host a special event, contact us to discuss the opportunities available for you at Studio One Toi Tū.

CREATIVEMORNINGS AKL

CreativeMornings AKL is a monthly breakfast lecture featuring a guest speaker each month. It is a great way to bring together like-minded individuals who are seeking inspiration and connections within the creative community. It started over a decade ago in NYC and there are now over 200 chapters around the world, making CreativeMornings/Auckland part of a global, creative whānau. At the heart of each chapter is a conversation that speaks to the intersection of creativity and the month's theme. Book your free ticket and join us for a coffee and creative discussion.

WHEN FRI 25 FEB, 8 - 9.30AM

THEME MONUMENTAL

WHEN FRI 25 MAR, 8 - 9.30AM

THEME FOLKLORE

BOOK DIRECTLY AT
CREATIVEMORNINGS.COM/CITIES/AKL

TWO HANDS TATTOO

TATTOO TIME

Tattoo Time is a three-day long flash party including the Two Hands Tattoo team and a whole lot of incredible guest artists from around Aotearoa. After a short hiatus Tattoo Time is back as an annual event held by Two Hands Tattoo. Tattoo Time acts as hub for numerous tattoo artists from all areas of New Zealand. The event will run across three consecutive days, the artists will tattoo solely from their flash. Walk-ins only, first in, first served.

WHEN 11 - 13 FEB
11AM - 8PM

COST FREE



STUDIO ONE TOI TŪ

PROUD CENTRES

Auckland Council is proudly partnering with Auckland Pride Festival for the 2021 season. Studio One Toi Tū is excited to be a Proud Centre and present a range of inclusive and fabulous events. We will be offering art workshops, poetry readings and live music events.

Stay tuned to our social media and the Proud Centre website for information on events at Studio One Toi Tū and around Tāmaki Makaurau.

WHEN 1 - 27 FEB
COST FREE

ADULT 161

SIOBHAN RIDGLEY — EMBROIDERY FOR CRAFTY QUEERS

Learn to embroider with fellow queers from local domesticated dyke, tutor Siobhan Ridgley. In this three-hour workshop you will create a patch as an expression of what pride means for you. You will learn hand sewing hacks and basic stitch techniques. To personalise your pride patch, you will then embroider your choice of text, symbols or illustration. As an evening drop-in class, please feel free to attend whenever suits your schedule.

WHEN MON 21 FEB
6 - 9 PM
COST FREE
CLASS 20 MAX
MATERIALS INCLUDED

ENROL: STUDIOONE.ORG.NZ

ADULT 001

SARAH YATES — UPCYCLED PRIDE FLAGS

In this basic hand-sewing class you will make your own pride flag or colourful bunting. We will use upcycled then hand-dyed materials to make your very own pride flag to take along to the celebration. No skills are necessary, just your time and some creativity. All materials will be provided but you can also bring your own.

WHEN SAT 26 FEB
6 - 9 PM
COST FREE
CLASS 12 MAX
MATERIALS INCLUDED

ENROL: STUDIOONE.ORG.NZ



SAME SAME
BUT DIFFERENT
—
PRIDE POETRY
SPEAKEASY
—

Samesame but different and Auckland Libraries present the seventh PRIDE Poetry Speakeasy of rainbow poets and poetry, with an open mic, guest readers Courtney Sina Meredith and Lily Holloway, and host Michael Giacon. Come along to read, listen and enjoy in our welcoming queer word nest.

WHEN WED 16 FEB
5 - 7PM
COST FREE



QUEER AF
—
QUEERS &
WARES MARKET
—

Championing the lgbtqi+ talent of Tamaki Makaurau the Queers and Wares market will be returning for Auckland Pride 2022!

Creatives from all around Aotearoa will be joining us for this event showcasing an array of stalls selling jewellery, ceramics, prints, photography, candles, clothing and much more. Buy locally and sustainably this summer while supporting queer artists.

WHEN SAT 19 FEB
10AM - 2PM
COST FREE



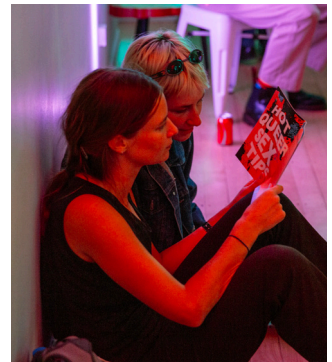
THE AGENDA
—
ISSUE THREE
LAUNCH
—

The Agenda Zine is an Auckland-based queer zine with a goal of amplifying queer voices and art to Aotearoa.

Come along to this fun, community-focused, vibrant launch party of issue three of the Agenda Zine. The event will feature performances from a range of amazing queer musical artists, you can snap up a zine for sale and be in with the chance to win prizes on the night!

Join The Agenda Zine for free drinks and kai and enjoy a spectacular night.

WHEN FRI 25 FEB
6.30AM - 10PM
COST FREE



ĀHUA COLLECTIVE

AN EVOLUTION OF IDENTITY NAVIGATING OUR SPACE

This exhibition will feature artists from the QTBIPOC Collective – Āhua. In this show we will review the spaces we navigate as takatāpui and queer people of colour.

We will aim to decolonise ideas of creativity, gender, sexuality and culture through representation of our own Āhutatanga (how we present ourselves) and the futures we want for our queer whānau. The works will range from 3D skin design to painting and illustration, showcasing the multiple ways we can express ourselves and our culture.

GALLERY

3 - 9 FEB 2022

OPENING:

THU 3 FEB, 6.30-10PM

BIG FOOT NZ

FOOT WORKS

Auckland Council and Bigfoot NZ present Footwork, a FREE weeklong exhibition and one-day sneaker symposium showcasing the hip hop inspired, pro-sports ignited, pop sub-culture, of the sneakerhead. The exhibition will feature a solo photography exhibition by Grantis 13 aka DJ Grantis alongside an exciting display of super exclusive models. Join us on 5 March for a chance to connect with others over a sneaker swap meet, DJs, food, live customising and restoration demos and much more.

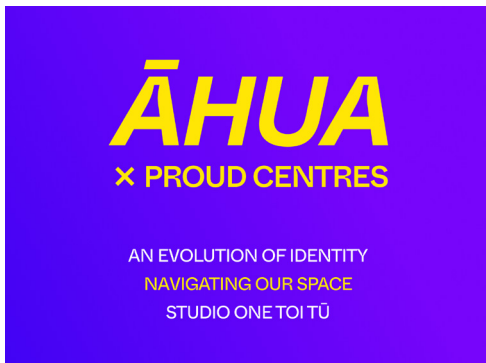
EXHIBITION

WHEN 4 - 11 MAR
10AM - 6PM

EVENT

WHEN SAT 5 MAR
10AM - 4PM

COST FREE



SHOW



EXHIBITIONS



JACK WOLF

KAURI AND TOHORĀ

“When hope feels lost, return to the wisdom of the natural world”
Saddened by the endangered state of the Kauri tree, which has been heavily impacted by colonization and is now under attack from dieback disease, Wolf was drawn to an ancient Māori legend, which tells of the ancestry between the Kauri tree and Tohorā (whale). The story illuminates indigenous healing methods, which inspired Wolf to create contemporary jewellery pieces made with Rongoā Māori principles. He sees the pieces as talisman to guide those who wear them through the grief and loss of this environmental crisis, a healing ritual for modern times. Wolf, who is pākeha, celebrates indigenous healing wisdom and advocates a collective need to return to ancient ways.

GALLERY 1

19 AUG - 20 JAN

CLOSING EVENT:

WED 20 JAN 2022, 5PM



JACK WOLF, 2021

ANTOINETTE RATCLIFFE

POTTER'S FIELD

In Western tradition, the term 'Potter's Field' is given to land used as a common grave for those unclaimed or unknown. Ratcliffe, a professional taxidermist, felt an affinity with the term, which could also be applied to her freezer. Taking an anthropomorphic approach to taxidermy, Ratcliffe's pieces prompt a dialogue around the relationships between people, the land and wildlife.

Ratcliffe uses only ethically sourced specimens. She has taxidermy pieces in public collections held by the NZ Bird Society, Zealandia, North Otago Museum, Upper Hutt Predator Free Trust, and in many private collections around New Zealand.

GALLERY 2

19 AUG - 20 JAN

CLOSING EVENT:

WED 20 JAN 2022, 5PM



ANTOINETTE RATCLIFFE, 2021

FELIX PRYOR

ARROWS FALLING
FROM THE SUN

Imps, angels, kings and Christs – Felix Pryor’s first solo exhibition is a celebration of all that is speculative and fantastical. Inspired by the alternate worlds of science fiction and fantasy, as well as the Western canon’s own foundational myths and legends, Pryor splices found images into detail-rich, hand-cut collage, which dissolve existing storylines and reassemble them into new narrative possibilities.

GALLERY 3

19 AUG - 20 JAN

CLOSING EVENT:

WED 20 JAN 2022, 5PM



FELIX PRYOR, 2021

LOUISE KEEN

VELVETEEN
PAINTINGS

Velveteen Paintings features mix media works on canvas, which use recycled materials and are machine stitched and stretched onto black velveteen. Keen works intuitively, being sensitive to the precarious and fragile nature of existence, her relationships with others and her connection with the natural world. Keen’s aim is that the work reflects how human vulnerability can prompt change and motivate us to become more authentic versions of ourselves.

GALLERY 4

19 AUG - 20 JAN

CLOSING EVENT:

WED 20 JAN 2022, 5PM



LOUISE KEEN, 2021

LUCIE BLAZE

ONE LOVE

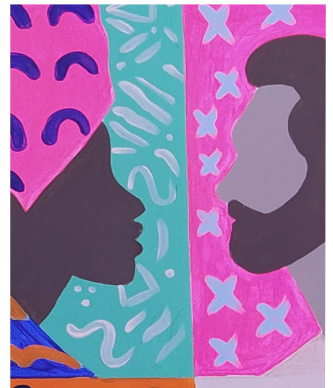
One Love features portraits representing the diverse cultures of Aotearoa. The work is executed in acrylic paint, with bold, colourful patterns and solid-coloured canvases. Blaze hopes that the work will inspire viewers to disregard differences and focus on what connects us as people. She says “every culture has something we can find uplifting and inspirational; we just have to open our eyes to see it”.

SIDEWALK GALLERY

19 AUG - 20 JAN

CLOSING EVENT:

WED 20 JAN 2022, 5PM



LUCIE BLAZE, 2021

MARK WHIPPY

—
**AUCKLAND UNDER
CONSTRUCTION**
—

Auckland Under Construction portrays the everyday workers on Auckland's construction sites. Inspired by the painter Edward Hopper who captured the alienated city dwellers of his time, Whippy juxtaposes scenes of workers with the wealth displayed by the building projects. The results of these projects, luxury apartments, hotels, housing developments and the central rail loop, may be widely celebrated but the unsung heroes, the ordinary people working on them, goes noticed. Whippy offers a chance for us to appreciate the beauty of these everyday people.

GALLERY 1 & SIDEWALK GALLERY

27 JAN - 24 FEB

OPENING:

WED 26 JAN, 5PM



MARK WHIPPY, 2021

TWO HANDS TATTOO

—
FOREVER
—

Forever is a collaborative exhibition that will include work from some of the finest tattoo artists in New Zealand and across the globe. This exhibition will act as a 'taster' for what to expect from the talented artists involved in *Tattoo Time*, a flash event at Studio One Toi Tū. Each artist involved will create a piece based on their own take of the word 'forever'.

GALLERY 2

27 JAN - 24 FEB

OPENING:

WED 26 JAN, 5PM



TWO HANDS, 2021

JOANNE BLACK

—
WHAKAATA KITEA (THROUGH
THE LOOKING GLASS)
—

Artist Joanne Black presents a series of paintings that explore the symbolic meaning and the use of mirrors in art. Mirrors are often depicted alongside women throughout art history. For Black, mirrors reflect a hidden truth: “The image that appears can be thought of as being more revealing than the mere surface appearance. The mirrored surfaces give us a reflection of ourselves and a gaze that is returned; we watch ourselves watching ourselves.”

GALLERY 3

27 JAN - 24 FEB

OPENING:

WED 26 JAN, 5PM

GARTH STEEPER

—
KORORAREKA OLIVE
GREEN AND OXIDE RED
—

A series of works depicting the northern town of Kororareka in the Bay of Islands, New Zealand around the 1820s. Whaling scenes, figure and landscape studies make up this new suite of paintings by Steeper. Painted predominantly using glazes of olive green, and oxide red over flake white underpainting, these seductive works depict both the folklore and history of this period in Aotearoa/ New Zealand.

GALLERY 4

27 JAN - 24 FEB

OPENING:

WED 26 JAN, 5PM



JOANNE BLACK, 2021



GARTH STEEPER, 2021

CREATIVE STUDIO RESIDENTS

Our Creative Studio Residency programme is open to applicants once a year. We select between two to five projects annually. Successful applicants will be supported by Studio One Toi Tū resources, networks and mentoring. The Residency concludes with an achievable exhibition or event to be delivered March 2022.

With a turbulent year and limited access to their studios this year's residents have been working extremely hard to put together a fantastic line up of exhibitions and events. We're proud to present the 2021 Creative Studio Residents' Exhibition alongside artists Ashleigh Taupaki, Esther Toclo and Kalee Jackson.



ESTHER TOCLO

KAILIYAN

KAILIYAN introduces works by Esther Toclo that explore the complex connections of her indigenous identity as an Igorot-Filipino living in Aotearoa. Moving between traditional methods of art making and photography, Toclo reflects on her personal experiences of the displacement that comes with migration. Honouring the craft of her matriarchal ancestors, Toclo creates woven art works using foraged plants.

Her photographic work offers a new narrative transcending the exploitative North American colonial photographic narratives of the past. Toclo's images celebrate the abundance of indigenous life and beauty in her migrant Cordilleran community of Tamaki Makaurau.

GALLERY

3 - 31 MAR 2022

OPENING:

WED 2 MAR, 5PM



ESTHER TOCLO, 2021

KALEE JACKSON

PERFORMER TYPE

Kalee Jackson works with drag and burlesque performers on their practice and relationship to Karangahape Road as a site of performance. Looking at common threads and differences within this performance community, interviews with a range of performance artists are used as a starting point to develop a typeface which responds to contemporary drag and burlesque performance practice. For this project Jackson draws on her/their strong creative practice as a graphic designer and typographer, and her/their role as an occasional drag performer and title-holding burlesque artist. Supported by: Waitematā Local Board

GALLERY

3 - 31 MAR 2022

OPENING:

WED 2 MAR, 5PM



KALEE JACKSON, 2021

ASHLEIGH TAUPAKI

KOPU-A-TAI

Through her residency project Ashleigh Taupaki investigates the site of the Kōpuatai Peat Dome, a large-scale wetland located in the Hauraki region. This unique environment holds significance as both a hub of biodiversity and as a living entity according to Māori memory and narrative. Through an indigenous lens, the wetlands can be seen as a kaitiaki (guardian) for Hauraki Māori, particularly Ngati Hako, the iwi the artist identifies with.

Her exploration of this landscape consists of sculptural forms in clay, found objects and photographs focussing on the ancestral ties to the land itself and how this informs nature.

GALLERY

3 - 31 MAR 2022

OPENING:

WED 2 MAR, 5PM



ASHLEIGH TAUPAKI, 2021

MAKE



ADULTS



ALVIN XIONG

REALISTIC DRAWING

Hone your skills in traditional drawing techniques and simplify the challenge of capturing a likeness in this stimulating course. Using reference materials supplied by the tutor and a photo of your choice, you will learn methods for starting a drawing and how to develop your work using shading, outline and texture. The tutor will recommend tips for correcting shape and will help make your drawings look true to life.

WHEN THU
9:30AM - 12PM
STARTS 17 FEB
LENGTH 8 WEEKS
COST \$270
CLASS 10 MAX

ENROL: STUDIOONE.ORG.NZ



ALVIN XIONG

PORTRAIT PAINTING IN OIL

Explore realistic portrait painting while working from a photo of your choosing. Learn oil painting techniques and how to use various brushes. You will begin with underpainting and then move to developing the structure of the head and facial features. The tutor will help with lighting, shading, and colour choices. All ability levels are welcome, as the class is structured to provide one on one instruction to each student.

WHEN THU
1 - 3:30PM
STARTS 17 FEB
LENGTH 8 WEEKS
COST \$270
CLASS 10 MAX

ADDITIONAL MATERIALS LIST WILL BE PROVIDED ON ENROLMENT

ENROL: STUDIOONE.ORG.NZ



BETH SERJEANT

—
PRINTMAKING DROP-INS
—

Come along and work independently in our printmaking studio alongside experienced tutor, Beth Serjeant. You can make use of our specialist equipment, including two small and one large-scale printing press that we'd love our community to utilise! Bring your own projects and work alongside like-minded creatives. Beth will be able to provide technical advice and some limited materials will be available.

WHEN TUE
10AM - 1PM
STARTS 1 FEB
COST \$5 PER HOUR

BRING YOUR OWN TOOLS, MATERIALS,
AND PROJECTS TO WORK ON

VAL ONG

—
THROW IT DOWN
—

An intensive eight-week ceramics course for those wanting to learn the basics of contemporary clay making on the wheel. This introductory course is ideal for students wanting to learn how to throw a variety of domestic shapes including cups, bowls and cylinders. This relaxed course is suitable for anyone who would like to give ceramics a go and enjoy some good banter!

WHEN TUE
6-8:30PM
STARTS 15 FEB
WED
6-8:30PM
STARTS 16 FEB

COST \$360
LENGTH 8 WEEKS
CLASS 8 MAX

INCLUDES UP TO 10KG CLAY, GLAZES AND FIRINGS FOR THIS AMOUNT OF CLAY

ENROL: STUDIOONE.ORG.NZ



ADULT 061

VAL ONG

— THROW & PINCH —

Join us for a relaxing eight-week afternoon ceramics course with Val. Through demonstrations and hands on learning you'll explore a mixture of hand building and wheel throwing techniques. You'll have fun understanding and experimenting with clay and all the possibilities that come with it!

WHEN WED, 2-4:30PM

STARTS 16 FEB

COST \$360

LENGTH 8 WEEKS

CLASS 8 MAX

INCLUDES UP TO 10KG CLAY, GLAZES AND FIRINGS FOR THIS AMOUNT OF CLAY

ENROL: STUDIOONE.ORG.NZ



ADULT 071

VAL ONG

— WEEKEND CLAY WORKSHOP —

Let's play with clay and create some fascinating pieces! It's entirely up to you on what you would like to make; domestic wares to endearing sculptures. There will be demonstrations throughout both days on hand building and wheel throwing to spark an idea!

WHEN SAT 19 & SUN 20 MAR
10AM - 3PM

COST \$280

CLASS 8 MAX

INCLUDES UP TO 10KG CLAY, GLAZES AND FIRINGS FOR THIS AMOUNT OF CLAY

ENROL: STUDIOONE.ORG.NZ



ADULT 081

VAL ONG

DROP-IN CERAMICS STUDIO

Need some time to work on a project? Want some technical advice on your process? On Fridays you can now work independently in our fully equipped ceramics studio. This weekly drop-in session is ideal for practitioners requiring studio space to work on their own projects or practice. Our technician, Val Ong will be available to provide basic technical advice.

Please sign in at reception, prior to 5pm.

WHEN FRI 12-6PM

STARTS 4 FEB

COST \$5 PER PERSON, PER HOUR

BRING YOUR OWN TOOLS, MATERIALS, AND PROJECTS TO WORK ON

PUBLIC BISQUE FIRING:

11 FEB 2022

PUBLIC GLAZE FIRING:

18 FEB 2022

SIRIPORN FALCON-GREY

MAKE YOUR OWN MINI PLANTER

A relaxing workshop to learn how to create your own funky mini planter! Using the slab building technique and playing with textures, your plants will be happy in their new custom planter handmade by you. Your mini planter will be bisque & glaze fired and ready for pick up at a later date.

WHEN FRI 14 JAN

10-11:45AM

COST \$55

CLASS 12 MAX

MATERIALS INCLUDED

ENROL AT: [FALCONGREYCERAMICS.](https://falcongreyceramics.wordpress.com/workshops/)

[WORDPRESS.COM/WORKSHOPS/](https://falcongreyceramics.wordpress.com/workshops/)



SIRIPORN FALCON-GREY

MAKE YOUR OWN CUP

An exciting workshop to learn how to create your own bespoke cup!

Using the slab building technique and playing with textures, create a one-of-a-kind cup handmade by you. Your cup will be bisque & glaze fired and ready for pick up at a later date.

WHEN FRI 28 JAN
10-11:45AM

COST \$55

CLASS 12 MAX

MATERIALS INCLUDED

ENROL AT: [FALCONGREY CERAMICS.
WORDPRESS.COM/WORKSHOPS/](http://FALCONGREY CERAMICS.WORDPRESS.COM/WORKSHOPS/)



SIRIPORN FALCON-GREY

MAKE YOUR OWN BOWL

This workshop will teach you how to create a bowl for a salad, cereal, or any of your favourite snacks!

We'll be using the pinch pot technique with emphasis on various textures. Your handmade bowl will be bisque & glaze fired and ready for pick up at a later date.

WHEN FRI 11 FEB
10-11:45AM

COST \$55

CLASS 12 MAX

MATERIALS INCLUDED

ENROL AT: [FALCONGREY CERAMICS.
WORDPRESS.COM/WORKSHOPS/](http://FALCONGREY CERAMICS.WORDPRESS.COM/WORKSHOPS/)



SIRIPORN
FALCON-GREY

—
**MAKE YOUR OWN
MUG**
—

This workshop will teach you how to make a mug using the slab building technique. Finish off your one-of-a-kind piece by creating your own individual markings and textures. Your mug will be bisque & glaze fired and ready for pick up at a later date.

WHEN FRI 25 FEB

10-11:45AM

FRI 8 APR

10-11:45AM

COST \$55

CLASS 12 MAX

MATERIALS INCLUDED

ENROL AT:

FALCONGREYCERAMICS.
WORDPRESS.COM/
WORKSHOPS/

SIRIPORN
FALCON-GREY

—
**MAKE YOUR OWN
OIL BURNER**
—

This workshop will teach you how to create an oil burner using the slab building technique. You will explore different finishes for aesthetics and functionality. Your handmade oil burner will be bisque & glaze fired and ready for pick up at a later date.

WHEN FRI 11 MAR

10-11:45AM

COST \$55

CLASS 12 MAX

MATERIALS INCLUDED

ENROL AT:

FALCONGREYCERAMICS.
WORDPRESS.COM/
WORKSHOPS/

SIRIPORN
FALCON-GREY

—
**MAKE YOUR OWN
FLOWER BUD VASE**
—

An exciting pottery workshop to learn how to create your own funky bud vase!

Learn the pinch pot technique and finish off your one-of-a-kind piece by creating your own individual markings and textures. Your bud vase will be bisque & glaze fired and ready for pick up at a later date.

WHEN FRI 25 MAR

10-11:45AM

COST \$55

CLASS 12 MAX

MATERIALS INCLUDED

ENROL AT:

FALCONGREYCERAMICS.
WORDPRESS.COM/
WORKSHOPS/



HAN NAE KIM

—
**KINTSUGI: THE ART
BROKEN PIECES**
—

Do you have damaged pieces of art made with wood, metal or ceramics? Embrace the markings of broken objects and transform them with lacquer and varnish decorated with gold and silver leaf. Lacquer is one of the oldest natural materials used in East Asian countries to repair damaged objects. Amend and adorn your fractured pieces and realise their newly restored glory.

WHEN WED
7 - 9PM
STARTS 16 MAR
LENGTH 2 WEEKS
COST \$195
CLASS 10 MAX

BRING YOUR OWN DAMAGED OBJECTS, ALL
OTHER MATERIALS INCLUDED

ENROL AT: HNAEKIM@GMAIL.COM

HAN NAE KIM

—
DRAWING ON A LARGE SCALE
—

Drawing can often be a small, and intimate process. In this class you will embrace drawing on a large scale to push the boundaries. You will be experimenting with different processes to translate your ideas into large works. You will also learn how to prepare your working surfaces including canvas, paper and wood.

WHEN MON
7 - 9PM
STARTS 16 FEB
LENGTH 3 WEEKS
COST \$180
CLASS 10 MAX

ADDITIONAL MATERIALS LIST WILL BE
PROVIDED ON ENROLMENT

ENROL AT: HNAEKIM@GMAIL.COM



HAN NAE KIM

—
A-Z OF CHARCOAL DRAWING
—

An intensive workshop designed for art enthusiasts of all ages and experience levels. Using charcoal, you will experiment with a range of drawing processes to explore this medium's limitless possibilities. You will then learn how to introduce other media to the charcoal through a series of exercises. Come along and discover the beauty of charcoal!

WHEN SAT 2 APR
10AM - 2PM

COST \$115

CLASS 10 MAX

MATERIALS INCLUDED

ENROL AT: HNAEKIM@GMAIL.COM

SIOBHAN RIDGLEY

—
BEGINNERS EMBROIDERY
—

In this beginner's embroidery course, you will learn an array of stitch techniques. Experiment with botanical embroideries and techniques such as stem stitch, French knots and five prong roses. Learn how to use your equipment as well as the modern tricks of the trade. Explore different thread counts and learn how to render with brick stitch. Come and enjoy this meditative hobby in a welcoming safe space.

WHEN TUE
6:30 - 8PM

STARTS 8-29 MAR

LENGTH 4 WEEKS

COST \$70

CLASS 10 MAX

STUDENTS TO BRING THEIR OWN HOOP AND NEEDLES, ALL OTHER MATERIALS PROVIDED.

ENROL AT SIOBHANRIDGLEY@GMAIL.COM



KIDS AND TEENS



TANJA NOLA

TEEN ARTWORK

In a fully equipped art studio, students work progressively to develop their own visual language while learning drawing, painting, printmaking, ceramics and 3D construction skills. Experienced artist and tutor, Tanja, supports students and encourages research and exploration into art history, music, and popular culture. Directed by individual needs, students discover their creative potential and build confidence in their art practice. This course is ideal for teens at all skill levels and is a great bridge for those considering further education in the arts.

AGE 13 - 17
WHEN THU, 4 - 6PM
STARTS 24 FEB
LENGTH 7 WEEKS
COST \$270
CLASS 8 MAX
MATERIALS INCLUDED

ENROL: STUDIOONE.ORG.NZ



SCHOOL HOLIDAYS



THE RECREATORS

KIDS WOODWORK

In this workshop, families will learn how to use a drill in detail and then design and assemble their own wooden masterpiece. Using sandpaper and paints to decorate, something made proudly as a family that will last the test of time. We use discarded offcuts of wood and mistinted paint.

Note: Have kids wear old clothing that may get paint on it and closed-toe shoes.

AGE 7+
WHEN WED 19 JAN
10AM - 2PM
COST \$10
CLASS 12 MAX
MATERIALS INCLUDED

ENROL AT
WWW.THERECREATORS.CO.NZ



THE RECREATORS

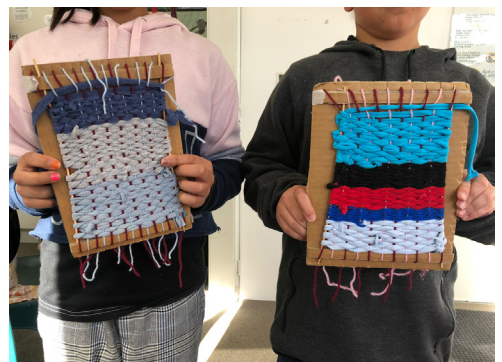
KIDS WEAVING WORKSHOP

In this workshop, The ReCreators will use a cardboard loom to weave upcycled t-shirt yarn into a beautiful woven piece of art. This is a mindful task.

The class teaches basic weaving but also a glimpse into the past of how clothes were made. It's like looking under a microscope. Understanding the past efforts and technology of how clothes are made today. It is also an opportunity to discuss fast fashion and its effect on our environment.

AGE 7+
WHEN THU 20 JAN
10AM - 2PM
COST \$10
CLASS 12 MAX
MATERIALS INCLUDED

ENROL AT
WWW.THERECREATORS.CO.NZ



ALVIN XIONG

—
HOW TO DRAW AN ANIME CHARACTER
 —

This one-day workshop will cover some useful tricks and techniques to draw anime characters. You'll learn useful tips such as drawing features, getting the right correct proportions and how to draw tricky elements like hands and hairs.

Using what you learn you'll finish the workshop with your very own anime character!

AGE 10+
 WHEN WED 20 APR
 10AM - 2PM
 COST \$85
 CLASS 10 MAX
 MATERIALS INCLUDED

ENROL: STUDIOONE.ORG.NZ



VAL ONG

—
KIDS CERAMICS
 —

Let's create some funky creatures out of clay! Students will be taught different hand building techniques to help create their very own characters from a favourite storybook, fairytale or show. They will explore lots of different techniques including pinch pots, slab building and mould making!

AGE 5-10
 WHEN TUE 26 & WED 27 APR
 10AM - 2PM
 COST \$185
 CLASS 8 MAX
 MATERIALS INCLUDED

ENROL: STUDIOONE.ORG.NZ



THE RECREATORS

SEW A KIWI

In this workshop kids will learn how to sew and make a Kiwi toy. This is a mindful activity that also teaches the art of sewing. We use discarded new and reused materials in this project.

The ReCreators will teach the blanket, running and hidden seam stitches as well as how to make templates and finalise your designs. Choose from a diverse range of fabrics and decorations

AGE 7+
WHEN TUE 26
10AM - 2PM
COST \$10
CLASS 12 MAX
MATERIALS INCLUDED

ENROL AT
WWW.THERECREATORS.CO.NZ



THE RECREATORS

ORIGAMI BOATS

Create origami boats with The ReCreators using upcycled paper. This is a mindful and fun activity. Watch out origami can become addictive! In this workshop kids will learn the art of folding paper to create beautiful paper creations.

The ReCreators are on a mission to show the world how to reduce and reuse our natural resources. It's easy, fun, creative, and sustainable. Join us on our journey.

AGE 7+
WHEN WED 27 APR
10AM - 2PM
COST \$10
CLASS 12 MAX
MATERIALS INCLUDED

ENROL AT
WWW.THERECREATORS.CO.NZ



HIRE



VENUE HIRE

MEETING AND EVENT SPACE

Whether you're a designer looking for a space to show your latest collection, an artist looking for an exhibition space or a book club seeking a central meeting place - we have the space for you. To find out how we can support you, visit 1 Ponsonby Road, or call us on 09 376 3221.

HIRE RATES

We have a range of room hire options available at an hourly rate*. To view our rates or to book a room please visit booking.aucklandcouncil.govt.nz/facilities

* A community rates discount is available by application

SPACES FOR HIRE

ROOM 5

A versatile meeting, workshop and function room with heating and air conditioning. Capacity: 50 people.

ROOM 6

A sunny versatile meeting, workshop and function room with views onto the rear deck. Capacity: 25 people.

ROOM 10

A large clean studio space used for conferences, seminars, workshops, pop-up exhibitions, film screenings and more. The space can be booked hourly or weekly. Capacity: 100 people.

ROOM 11

A dedicated art workshop to accommodate visual art practices or creative workshops. Fitted with a printing press, tables, chairs, easles, lighting track and a spotlight. This space can be booked hourly, daily, or half-daily. Capacity: 30 people.

ROOM 12

Dedicated art workshop set up to accommodate sculpture practices. Fitted with pottery wheels. This space can be booked hourly, daily, or half-daily. Capacity: 20 people.

STUDIO ONE — TOI TŪ

OPENING HOURS

—

All spaces

Mon – Fri 9am – 5pm
Sat & Sun Closed

—

Residents

24/7 access

ACCESS

—

All rooms and galleries
are wheelchair accessible.

LOCATION

—

1 Ponsonby Road
Auckland, New Zealand

CONTACT

—

09 376 3221
info@studioone.org.nz
studioone.org.nz

facebook.com/studioonetoitu
instagram.com/StudioOne.ToiTu

#VisitCreateMake
#HirePlayShow
#StudioOneToiTu