

STUDIO  
ONE  
—  
TOI TŪ

WHAT'S ON  
—  
APR - JUN 2025

PROGRAMME

2

in our environment



Mara Kai

KIA ORA KOUTOU,  
NAU MAI HAERE MAI KI  
STUDIO ONE TOI TŪ!

WE HAVE A HUGE LINE  
UP OF CREATIVE EVENTS  
THIS AUTUMN, INCLUDING  
EXHIBITIONS, TALKS, AND  
EVENTS. CELEBRATE WORLD  
OF CULTURES, MATARIKI  
FESTIVAL AND MUCH MORE!

JOIN US THIS AUTUMN AND  
VISIT, CREATE, MAKE  
AT STUDIO ONE TOI TŪ.

# FIND OUT MORE

The creative precinct at Studio One Toi Tū is a hub for making. At the intersection of arts and community, it is a place to meet, exchange, grow, learn and join a neighbourhood of creative activity at 1 Ponsonby Road.

If you would like to receive details of upcoming events and programmes, like our Facebook page, follow us on Instagram, visit our website or email us to subscribe to our newsletter.

09 376 3221  
info@studioone.org.nz  
studioone.org.nz

facebook.com/studioonetoitu  
instagram.com/StudioOne.ToiTu

#VisitCreateMake  
#HirePlayShow  
#StudioOneToiTu

## LOCATION

—  
1 Ponsonby Road  
Auckland, New Zealand



# CONTENTS

<b>ARTIST PROFILE</b>	<b>P. 8 - 11</b>
<b>OPEN</b>	<b>P. 12 - 21</b>
<b>SHOW</b>	<b>P. 22 - 27</b>
<b>MAKE</b>	<b>P. 28 - 37</b>
—	
<b>ADULTS</b>	
CERAMICS	P. 30 - 35
JEWELLERY	P. 35
PRINTMAKING	P. 36
PAINTING	P. 36
DRAWING	P. 36 - 37
—	
<b>KIDS, TEENS &amp; SCHOOL HOLIDAYS</b>	<b>P. 38 - 41</b>
—	
<b>HIRE</b>	<b>P. 42 - 47</b>

## HIRE, PLAY, SHOW



## VISIT, CREATE, MAKE

With opportunities for individuals and community groups through to experienced professionals, we offer a range of studio spaces for hire, offering you a place to workshop an idea, learn a new technique or sharpen your skills.

Become a part of the creative community at Studio One Toi Tū by applying to be a part of our exhibition programme, work with us as a tutor, or hire our space.

## STUDIO SPACES

---

We have a range of studio options and are one of the few precincts in Auckland to offer access to 'messy' workshops suitable for ceramicists, sculptors and object makers. We also offer a number of open studio spaces that can be hired individually or collectively for making, meetings, workshops or temporary events.

We are located in the heart of central Auckland with free wi-fi, kitchen facilities and the possibility for 24-hour access. Contact us to find out how we can support you.

## THE CELL BLOCK

---

The Cell Block studio spaces are private studios. Each studio comes with 24-hour access and is hired on a monthly basis.

## VILLA STUDIO

---

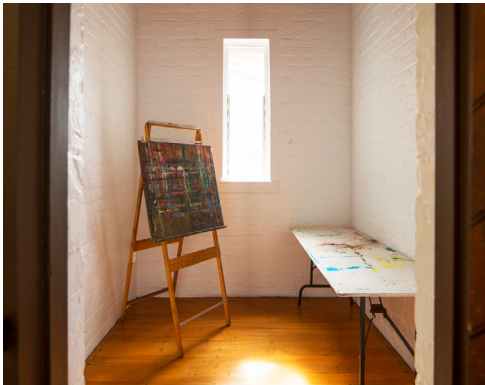
A shared studio space with access to the sculpture workshop is available. It comes with 24-hour access and is hired on a monthly basis.

## WORKSHOP HIRE

---

Studio One Toi Tū has two 'messy' workshops that can be hired at an hourly rate with access to our ceramic and printmaking equipment. If you have a project and need that extra space to make it happen, this is the option for you.

Contact Studio One Toi Tū to find out more information and check the availability of our studios, gallery and spaces for hire.



## CALL FOR EXHIBITION PROPOSALS

—

Studio One Toi Tū welcomes innovative approaches to creative practice and offers opportunities for you to be a part of our diverse exhibition programme. Our four ground floor galleries and Sidewalk Gallery window space can accommodate various visual art practices and are available for hire through an annual call for proposals. Our next call out will be in mid-2025 for exhibitions in 2026.

## CALL FOR TUTORS PROPOSALS

—

Studio One Toi Tū welcomes new and engaging course and workshop proposals from all creative disciplines, ranging from drawing, taxidermy, weaving and printmaking. Courses and workshops can be aimed at adults, youth or proposed as part of our school holiday programme.

Successful tutors are supported through resources available at Studio One Toi Tū, including the use of fit-for-purpose studios and workshop rooms.

## CALL FOR RESIDENCY

—

Our Creative Studio Residency programme is open to applicants once a year. We select between two to five projects annually. Successful applicants will be supported by Studio One Toi Tū resources, networks and mentoring. The Residency concludes with an achievable exhibition or event. 2021 Residents included Esther Toclo, Kalee Jackson and Ashleigh Taupaki. Our next call out is planned for Term 3, 2025.



EMMA SAVAGE, 2021

# ARTIST PROFILE

---

VAL ONG

---

CERAMICIST

CAN YOU TELL US ABOUT YOURSELF AND YOUR CONNECTION WITH STUDIO ONE TOI TŪ?

---

Hello, I'm Val, a ceramic artist, and I've been a part of Studio One Toi Tū since 2019. This space has been an important part of my life, both as an artist and a tutor, as it has allowed me to connect with incredible people from all walks of life.

---

WHAT TYPES OF COURSES DO YOU TEACH, AND WHAT OUTCOMES CAN STUDENTS EXPECT?

---

I teach a mix of hand-building and wheel-throwing courses. Beginners on the wheel can expect to create functional pieces like bowls, mugs, and plates, and returning students can expect lidded shapes, vases and dinner bowls. I do have a soft spot for the kids courses as I'm always in awe with what children create - we sculpt characters and scenes. For example, some of my favourites have been a spooky graveyard scene for Halloween or creating fun fantasy castles.

## CERAMICS WORKSHOPS

---

If you're keen to explore ceramics Val offers a number of sessions throughout the term including adult workshops and courses, school holiday sessions and kids term courses.

Check out MAKE pg28 onwards for more info about what's on offer.





HOW DO YOU HELP STUDENTS EXPLORE AND EXPAND THEIR CREATIVE BOUNDARIES, REGARDLESS OF EXPERIENCE LEVEL?

—

I introduce a wide range of techniques and approaches to clay, encouraging students to explore and find what resonates with them. I also provide space for personal projects, allowing them to develop. More than anything, I emphasise the importance of letting go - embracing the unpredictability of clay so that the process remains both freeing and enjoyable.



ARE YOU CURRENTLY WORKING ON ANY PERSONAL PROJECTS?

—

Yes! I'm preparing for my pottery apprenticeship in Okayama, Japan, where I'll be learning Bizen-yaki starting in September. I'll be creating a body of work to fire in their anagama kiln in November, while also exploring nearby pottery towns and the Setouchi Triennale along the way. I'm super excited.





OPEN



# CREATIVE TALKS, POP-UPS AND EVENTS



## MAKE IT HAPPEN HERE

From creative conversations to pop-up exhibitions, there's always something happening at 1 Ponsonby Road. If you require a studio for a project or workshop, would like to showcase your work or are in need of a venue to host a special event, contact us to discuss the opportunities available for you at Studio One Toi Tū.

## WORLD OF CULTURES

### WORLD OF PROWL OUTDOOR EXHIBITION

#### PROWL PRODUCTIONS

Striking photographs of Prowl's Waacking and Vogueing dancers capture the powerful connection between dance and cultural expression, illustrating how rhythm and movement transcend boundaries to bring communities together.

Discover these incredible images showcased across outdoor exhibition locations along Ponsonby Road and Karangahape Road.

You can catch the World of Prowl community dancing live for the 'World of Waacking Battles - Express Your Culture'. (see page 18)

WHEN 17 MAR - 14 APR

WHERE PHANTOM BILLBOARDS ON 20 PONSONBY ROAD (OPPOSITE STUDIO ONE TOI TŪ) AND ACROSS KARANGAHAPE ROAD



### EAT MY RICE

#### LOUIE BRETaña

Food. Culture. Respect.

More than just a meal, Filipino artist Louie Bretaña shares a mouthful of stories and morsels of truth. Suspend Euro-colonial dining norms and practices and experience the Philippine food culture and history in full flavor and on its own terms by eating on banana leaves with our hands.

Photo: Eat My Rice by Louie Bretaña at Performance Art Week Aotearoa (PAWA) 2017. Image courtesy of PAWA. Photo by Essi Airisniemi

WHEN FRI 28 MAR

6 - 7PM

COST FREE

CLASS 20 MAX

ENROL [STUDIOONE.ORG.NZ](http://STUDIOONE.ORG.NZ)



## LET'S MAKE AN ORIGAMI POP-UP CARD

AKIKO DIEGEL

Join us for a creative origami pop-up card workshop, where you'll learn to craft stunning, three-dimensional designs! Perfect for all skill levels, this hands-on session will guide you through the techniques of paper folding and cutting, allowing you to create personalized cards for any occasion. Origami, an art form with deep cultural significance, symbolizes patience, precision, and creativity. Rooted in Japanese tradition, it celebrates the transformation of a simple sheet of paper into intricate works of art, making it a meaningful way to express care and thoughtfulness. Bring your imagination and leave with beautiful creations that are sure to impress!

WHEN SAT 29 MAR  
10.30AM - 12PM  
COST FREE  
CLASS 20 MAX  
ENROL STUDIOONE.ORG.NZ  
MATERIALS INCLUDED



## JS CARVING WORKSHOP

JIM TO'O STRETTON

Pacific carver Jim To'o Stretton offers a unique opportunity to connect with the Pacific heritage in a deeply authentic way. This workshop celebrates Pacific culture through the practice of carving that has been cherished for generations.

The workshop begins with storytelling followed by learning carving techniques. Workshop participants will be guided in creating their own Pacific design to carve their own unique pieces. Students will be provided a carving kit to work from and take home to continue their carving journeys.

WHEN SAT 29 MAR  
11AM - 4PM  
COST \$100  
CLASS 20 MAX  
ENROL STUDIOONE.ORG.NZ  
MATERIALS INCLUDED



## WORLD OF CULTURES

### GAGANA LEILOA

—  
VILLA JUNIOR LEMANU  
—

*Gagana Leiloa* is a 30-minute interactive performative dance piece by Villa Junior Lemanu, presented as part of World of Cultures and the opening of our April exhibitions. This work stems from Villa's fear of losing the Samoan language in his family where only his parents are fluent speakers. Through *Gagana Leiloa*, the artist explores his fear the language may be lost for future generations and invites others who face similar challenges to actively reclaim and protect their cultural heritage. This powerful performance incorporates interactive elements, encouraging audience engagement throughout the space.

WHEN WED 2 APR  
7 - 7.30PM

COST FREE DROP-IN

### WORLD OF WAACKING BATTLES - EXPRESS YOUR CULTURE

—  
PROWL PRODUCTIONS  
—

Witness a live and dynamic Waacking dance battle that welcomes both seasoned and novice dancers. Celebrate and elevate Waacking - a vibrant dance form with deep roots in LGBTQIA+ and POC communities, alongside the rich tapestry of cultures in Aotearoa.

In this World of Cultures battle edition - dancers must represent their ethnic culture/s either in their fashion, makeup or movement.

WHEN SAT 5 APR  
1 - 4PM

COST KOHA DONATION ENTRY





## CALLIGRAPHIC ABSTRACTION 101

—  
ANTHONY ZEMKE  
—

Discover how to transform timeless verses of Persian poetry into enigmatic lines and forms through the practice of 'calligraphic abstraction'. This workshop blends Eastern and Western styles of artmaking to capture the beauty of language beyond cultural and linguistic boundaries. Participants will be provided with beginner calligraphy exercises, a selection of Persian poetry, ink pens and paper.

WHEN SAT 5 APR

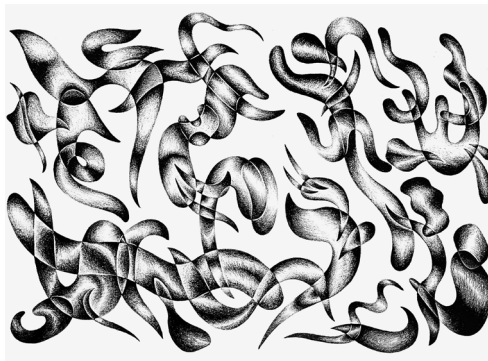
1 - 4PM

COST FREE

CLASS 20 MAX

ENROL STUDIOONE.ORG.NZ

MATERIALS INCLUDED



## AUNTY'S HOUSE PRESENTS SKETCH&SIP: NOKSHI KOTHA EMBROIDERED TALK

—  
A relaxed afternoon stitching with community facilitated by Sahana Rahman as part of World of Cultures 2025 at Studio One Toi Tū. Sahana's workshops are inspired by her multicultural background and South Asian heritage, featuring nakshi kantha—a Bengali communal embroidery community-driven practice where each stitch brings us closer together.

Bring a meaningful item to share, stitch and explore collaborative processes in a space designed for creativity, stories, and culture. As always, we will have spicy chai to sip and delicious snacks + DJ basmami will provide live cultural vibes to keep energy flowing!

WHEN SUN 6 APR

1 - 5PM

COST FREE DROP-IN

CLASS 33 MAX

ENROL STUDIOONE.ORG.NZ

MATERIALS INCLUDED



## AXIS

—  
GEORGIE JOHNSON  
& JAMES HUNT  
—

'AXIS' is a visual conversation between artists Georgie Johnson and James Hunt.

Through the artists' distinct approach to painting, they reflect on human relationships with nature. How can we reshape our relationships with nature to decentre the human in the face of climate catastrophe?

'AXIS' is a visceral combustion of styles that meditate on natural history, current social relationships and imagined states.

ROOM 10

11 APR - 16 APR

OPENING EVENT

THU 10 APR, 5 - 8PM

## MAKE YOUR OWN ART MATERIALS FROM PLANTS

—  
WILD STUDIO  
—

Learn how to make your own artist's drawing charcoal sticks, rich black inks for drawing and lettering, and craft a dip pen from foraged materials. Then dive into the world of botanical colour! We'll show you how to extract beautiful, vibrant hues from plants, make your own coloured painting inks (like watercolours) and experiment with them.

Perfect for Mother's Day. Suitable for experience levels. Age 12+

Morning tea included + a pack of handmade tools, inks & materials to take home.

WHEN SUN 11 MAY

10AM - 3.30PM

COST \$185

ALL MATERIALS INCLUDED

ENROL [WILDSTUDIO.CO.NZ](http://WILDSTUDIO.CO.NZ)



PHOTO CREDIT: JAKE DENNIS



## YOUTH WEEK

### DROP-IN ART SESSION

---

To celebrate Youth Week, we're hosting a one-off Casual Drop-In Art Making session just for you! If you're 17+ and finishing school, come check out our space, bring a friend along, and get hands-on with some art. Stay for an hour or the whole session—it's up to you! In our dedicated art studio, you can try clay sculpting, drawing, or painting with support from two local artists and tutors Tanja Nola and Val Ong who will be on hand to share tips and techniques. No bookings needed—just drop in, create, and enjoy!

AGE YOUNG ADULTS 17+

WHEN SAT 24 MAY  
10AM - 4PM

COST FREE

CHECK OUT

[WWW.ARATAIOHI.ORG.NZ/YOUTHWEEK/](http://WWW.ARATAIOHI.ORG.NZ/YOUTHWEEK/)

FOR ALL THE YOUTH WEEK PROGRAMMING



## MATARIKI FESTIVAL

### RONGOĀ MĀORI WORKSHOP

---

DONNA KERRIDGE

---

Studio One Toi Tū is excited to host a Rongoā workshop with Donna Kerridge, a registered Medical Herbalist and traditionally trained Rongoā Māori practitioner. In this session you will learn about the philosophy of traditional Māori medicine and how this applies to our care and wellbeing. Learn how to make a balm for the whole whanau using nature's gifts.

WHEN WED 11 JUN  
12 - 1.30PM

COST FREE

CLASS 12 MAX

ENROL [STUDIOONE.ORG.NZ](http://STUDIOONE.ORG.NZ)



## MATARIKI FESTIVAL

### TANIWHA BESTIES RIDE OR DIE EXHIBITION

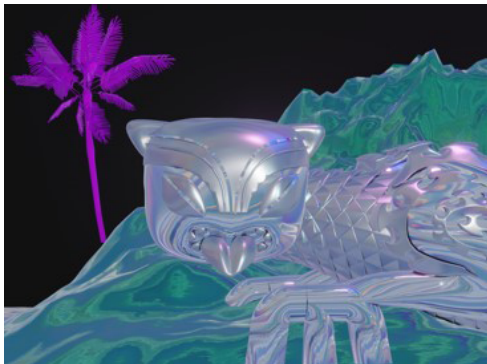
—  
KAHURANGIARIKI SMITH

In celebration of Matariki, Kahurangiariki Smith presents a specially curated collection of Taniwha works, showcasing both cherished pieces from the past and new creations to welcome the arrival of the New Year.

Kahurangiariki's waka are Te Arawa, Tainui, Takitimu, Horouta and Mataatua. Having been raised with traditional Maori values, she has a keen interest in her heritage, and the stories of her ancestors.

ROOM 10  
21 JUN - 12 JUL

OPENING EVENT  
SAT 21 JUN, 1 - 3PM



### CLAY VESSEL MAKING FOR OUR BELOVED

—  
KAIAKO: RHONDA HALLIDAY  
FACILITATOR:  
CHANTEL MATTHEWS

What does it mean to create a vessel to carry our beloved? The intention behind this workshop is to create an ipu (vessel) whenua (land) that explores our connection to the land and what it means to return to the land through a combination of contemporary and traditional practices where vessels can be made to contain the likes of whenua (placenta), Koiwi (bones), or, in recent times, ashes. Participants will be encouraged to bring tools or items that hold meaning to them, including stones, shells, stencils, muka, or interesting patterns, considering what it means for the vessel to hold something precious.

WHEN     SUN 22 JUN  
           11AM - 3PM  
COST     \$100  
CLASS    12 MAX  
ENROL    STUDIOONE.ORG.NZ



## PAINTING WITH ONEONE (SOIL)

—  
STACEY NOEL  
—

This workshop will involve learning to create paint from Oneone (soil) and uku (clay) on Harakeke paper. Participants will create symbols representing loved ones who have passed on, to honor their spirit and the participant's courage during this time of Matariki.

Stacey is a secondary teacher, arts facilitator, artist, traveller and most importantly a mum. With 30 years of teaching in various spaces, she has developed a love of supporting people tell their stories through film, poetry, painting, jewellery and many other mediums.

WHEN SAT 28 JUN  
11AM - 3PM  
COST \$50  
CLASS 12 MAX  
ENROL STUDIOONE.ORG.NZ  
ALL MATERIALS INCLUDED

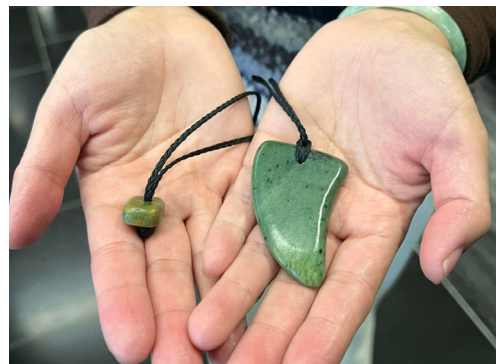


## POUNAMU REI NIHO TOOTH PENDANT WORKSHOP

—  
AOTEAROA BONE AND STONE  
—

Join us for an immersive workshop exploring the traditions of Rei Niho Paraoa/Tohora, pendants made from whale teeth. These taonga, with roots in Eastern Polynesia, connect us to the first adventurers who voyaged to Aotearoa. In this hands-on experience, you will learn the art of crafting contemporary Pounamu whale teeth pendants, inspired by the fearless navigators who explored the Pacific using the stars and ocean currents. Using grinders, drills, and sanding techniques, you'll craft your very own pendant while uncovering the stories of these ancient voyagers. A perfect blend of Māori tradition and modern craftsmanship.

WHEN SAT 28 JUN  
10AM - 6PM  
COST \$60  
CLASS 10 MAX  
ENROL STUDIOONE.ORG.NZ



# EXHIBITIONS



## POTLUCK

—

## GROUP SHOW

—

A gourmand's choice of local illustrators come together for a playful feast of art. They explore culture, stories, and adventures around food and the communal dining experience. Using traditional, digital, and unconventional mediums, the artworks decorate walls and tables, creating a journey from pencil to plate. This vibrant showcase invites viewers to enjoy a smorgasbord of delectable art treats that celebrate the joys of kai and shared meals.

GALLERIES 1 & 2

3 APR - 1 MAY

OPENING EVENT

WED 2 APR, 5PM

## TALATALAINA O LE SIAPO

—

TILIITAUUA  
FLORENCE  
ULUTUNU

—

*Talatalaina o le Siapo* is an ode to reclamation and healing through the art of siapo-making. This work combines visual and audio elements to offer a unique perspective on the stories embedded in the making process and the resilience and mana our ancestors embodied. Each piece invites reflection, creating space to connect with the narratives that emerge from this ancestral practice.

GALLERY 3

3 APR - 1 MAY

OPENING EVENT

WED 2 APR, 5PM

## GOGO

—

SAPATI MOSSIAH  
AVEI FINAI

—

This exhibition celebrates the *gogo*, or frigate bird, with two timber sculptures made from salvaged rimu and matai. Revered as messengers and navigational guides, the *gogo* symbolizes journeys across the Pacific. *Out to Sea* and *Back to Land* sculptures highlight the bird's connection to the ocean and its role as a symbol of safe homecoming, inviting reflection on personal travels and the joy of returning home.

GALLERY 4

3 APR - 1 MAY

OPENING EVENT

WED 2 APR, 5PM



REBECCA TER BORG, 2024



TILIITAUUA FLORENCE  
ULUTUNU, 2024



SAPATI MOSSIAH  
AVEI FINAI, 2024

EXPOSURE 20-YEARS:  
AUCKLAND PHOTO DAY  
RETROSPECTIVE

AUCKLAND FESTIVAL OF  
PHOTOGRAPHY (GROUP  
EXHIBITION, CURATED  
BY DANIEL HO)

A curated collection of 100 photographs celebrating 20 years (2004-2024) of public submissions from Auckland Photo Day, an annual 24-hour event presented by the Auckland Festival of Photography. The exhibition highlights and celebrates the many individual pockets of culture and identity present in New Zealand's biggest city, capturing moments of connection, iconic landmarks, suburban scenes, everyday life, peculiar moments, and significant events. These images expose, both conceptually and artistically, what Auckland was like, what it is now, and where Auckland may be heading: OUR Auckland.

GALLERY 1  
8 MAY - 5 JUN

OPENING EVENT  
WED 7 MAY, 5PM



MANON FLEURENTIN, 2025

GOLD IN SILENCE  
—  
HANNAH WHITING  
—

*Gold in Silence* captures the sacred solitude of nature, where silence becomes a companion, amplifying the land's eternal presence. This black-and-white photography exhibition contrasts the interplay between light and shadow, distilling landscapes to their essence and revealing their layered intricacies. Each image evokes stillness, encouraging contemplation to allow a quiet truth to reverberate within nature's vastness, we encounter both a mirror and a guide.

GALLERY 2  
8 MAY - 5 JUN

OPENING EVENT  
WED 7 MAY, 5PM



HANNAH WHITING, 2025



**KATHA O MAATRAM:  
STORIES OF  
BECOMING**

—  
SAHANA RAHMAN

—  
*Katha O Maatram: Stories of Becoming* explores identity through the journey of Sahana Rahman, a Bangladeshi-Sri Lankan Tamil born in Aotearoa. Using surrealism and fictional storytelling, Rahman reflects on past selves, capturing the evolution of authenticity through memory. *Katha O Maatram* reimagines Mughal miniature painting, blending tradition with surrealism to create a rich tapestry of culture, identity, and belonging.

GALLERY 3  
8 MAY - 5 JUN

OPENING EVENT  
WED 7 MAY, 5PM



SAHANA RAHMAN, 2025

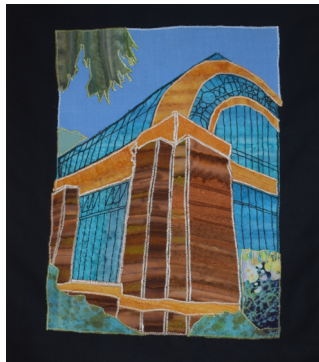
**URBAN WHIMSY**

—  
ADELE MCNUTT

—  
Urban landscapes and objects, crafted from fabrics, reveal the tactile and visual beauty in the everyday. Traffic cones, unremarkable warning symbols, ironically guide viewers while exploring themes of change, 'progress,' and humorous portents of danger — not just on the road ahead but for the planet. Through applique and embroidery, these works capture architecture, people, built environment, and the natural beauty of the evolving, dynamic landscape of Tāmaki Makaurau.

GALLERY 4  
8 MAY - 5 JUN

OPENING EVENT  
WED 7 MAY, 5PM



ADELE MCNUTT, 2025

**HISTORY IS DUST**

—  
KURT PAYNE

—  
Like a magpie Kurt collects fragments from books, blogs, films, earworm lyrics, obsessions, and spiritual mantras—enciphering these moments into coded messages on cotton and linen. By pushing the boundaries of handweaving techniques like crackle, twills, and Bronson lace, text transforms into abstract colour and texture, rich in meaning yet indecipherable. These highly practical, everyday objects serve as souvenirs of life, offering an intriguing enigma of forgotten meanings.

SIDEWALK GALLERY  
8 MAY - 5 JUN

OPENING EVENT  
WED 7 MAY, 5PM



KURT PAYNE, 2025

**TŪHONONGA: CO-OCCUPYING  
BETWEEN RANGI AND PAPA**

—  
MATANGIREIA YATES-FRANCIS

*TŪHONONGA* explores the integration of architecture and the natural world, guided by Tikanga Māori to redefine how we co-occupy space with wider ecologies. Grounded in Māori knowledge and bridging Te Ao Māori and Te Ao Pākehā, it envisions a cohesive future where built environments foster biodiversity, cultural identity, and thriving communities. By prioritising the whenua and creating spaces that are authentically Māori, *TŪHONONGA* offers iwi, hapū, and whānau innovative pathways for community living and housing on ancestral land. Through this, it reclaims and reimagines living environments, championing a harmonious relationship with nature and a flourishing cultural connection.

GALLERY 1 & 2  
12 JUN - 10 JUL

OPENING EVENT  
WED 11 JUN, 5PM



MATANGIREIA YATES-FRANCIS, 2025

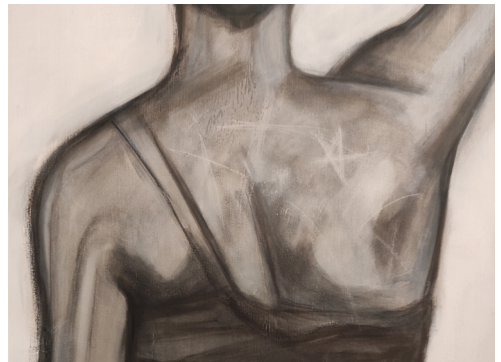
**DEDWOOD**

—  
MARIE HEMO TITI MAPA  
& TUI HIRABAYASHI

*DEDWOOD* reclaims the colonial and Māori names of Ponsonby (Te Tahī Rimu), examining histories of erasure and resilience shaped by gentrification and displacement. Using industrial materials like steel, timber, and plywood, it embodies the weight of these transformations, reflecting on how colonisation and urban development have shaped and divided ownership, sovereignty, and belonging. It affirms that connection to whenua, moana and awa is the foundation of Aotearoa's identity and future, declaring that Māori and marginalised cultures are not dead—they are living, breathing, evolving, and essential to the ongoing creation of this land.

GALLERY 3  
12 JUN - 10 JUL

OPENING EVENT  
WED 11 JUN, 5PM



TUI HIRABAYASHI, 2024

## HĀ - BREATHE

—  
NGĀ RANGATAHI TOA  
—

HĀ—it is life, connection, and wairua. This rangatahi co-designed exhibition explores Hā as the unseen force that binds us to whakapapa, our creator, and all living beings.

Rangatahi express their relationship with Hā through mixed media as a source of grounding, energy, and renewal. Manuhiri are invited to experience Hā through their eyes, to feel its presence and embrace its stillness.

Hā reminds us that in the pause, there is beauty, and we often overlook the subtle moments that hold the most meaning.

Hā ki roto, Hā ki waho.

GALLERY 4

12 JUN - 10 JUL

OPENING EVENT

TUE 10 JUN, 6PM

## MOEMOEĀ

—  
PAIGE NEBBELING  
—

In Māori tradition, *moemoeā* (dreams) are more than subconscious visions; they serve as prophecies, weaving together thoughts, wairua (spirit), and personal narratives. Historically, *moemoeā* guided navigation, forewarned of illness or battle, and connected the living with those who have passed. Through oil painting, the artist reimagines *moemoeā* as a meditative conduit—a portal where emotions and identity converge. This work highlights the historical significance of *moemoeā*, drawing from both the artist's tūpuna and their own lived experiences.

SIDEWALK GALLERY

12 JUN - 10 JUL

OPENING EVENT

WED 11 JUN, 5PM



NGA RANGATAHI TOA, 2025



PAIGE NEBBLING, 2025

MAKE



# ADULTS



## ADULT 201

## VAL ONG

—  
THROW & PINCH  
—

Join Val for a relaxing six-week evening ceramics course where you'll explore both hand-building and wheel-throwing techniques. Through demonstrations and hands-on learning, you'll have fun experimenting with clay and discovering its endless possibilities. Finished works will be fired and ready for collection once completed.

WHEN MON  
6 - 9PM  
STARTS 28 APR\*  
COST \$395  
LENGTH 6 WEEKS  
CLASS 9 MAX  
INCLUDES UP TO 10KG CLAY,  
GLAZES AND FIRINGS  
ENROL [STUDIOONE.ORG.NZ](http://STUDIOONE.ORG.NZ)  
\*CLASS FALLS ON KINGS  
BIRTHDAY 2 JUN



## ADULT 202

## VAL ONG

—  
THROW IT  
DOWN REMIX  
—

This course is open to beginners, intermediate potters, and beyond! Learn to throw on the wheel, refine your technique, and take on new challenges. Beginners will focus on centering, throwing cylinders, and bowls, while intermediate students will tackle lidded jars, noodle bowls, and vases to push their skills further. Finished works will be fired and ready for collection once completed.

WHEN TUE  
6 - 9PM  
STARTS 29 APR  
COST \$395  
LENGTH 6 WEEKS  
CLASS 9 MAX  
INCLUDES UP TO 10KG CLAY,  
GLAZES AND FIRINGS  
ENROL [STUDIOONE.ORG.NZ](http://STUDIOONE.ORG.NZ)



## ADULT 203

## VAL ONG

—  
THROW IT DOWN  
—

Immerse yourself in this intensive six-week course designed for beginners keen to learn the fundamentals of contemporary wheel-thrown ceramics. You'll practice creating various domestic shapes, including plates, bowls, and cylinders. Finished works will be fired and ready for collection once completed.

WHEN WED  
6 - 9PM  
STARTS 30 APR  
COST \$395  
LENGTH 6 WEEKS  
CLASS 9 MAX  
INCLUDES UP TO 10KG CLAY,  
GLAZES AND FIRINGS  
ENROL [STUDIOONE.ORG.NZ](http://STUDIOONE.ORG.NZ)



## VAL ONG

## WEEKEND CLAY WORKSHOP

Dive into this jam-packed weekend workshop, perfect for beginners with limited free time who want to develop foundational clay-making skills. Over two days, you'll explore both wheel-throwing and hand-building techniques. The first day focuses on wheel throwing, while the second covers hand-building basics and trimming the pieces created on day one. Val will also provide guidance if you'd like to work on a personal project.

All works will be glazed and fired, ready for collection once completed.

WHEN SAT 31 MAY & SUN 1 JUN  
10AM - 3PM  
COST \$295  
CLASS 9 MAX  
INCLUDES UP TO 10KG CLAY,  
GLAZES AND FIRINGS  
ENROL [STUDIOONE.ORG.NZ](http://STUDIOONE.ORG.NZ)



## VAL ONG

## DROP-IN CERAMICS STUDIO

Looking for time to focus on a project or need some technical advice? Join us on Fridays to work independently in our fully equipped ceramics studio. These weekly drop-in sessions are perfect for practitioners seeking studio space to develop their own projects or hone their skills. Our technician, Val Ong, will be on hand to offer basic technical guidance.

WHEN FRI 12 - 6PM  
STARTS 2 MAY - 11 JUL  
COST \$5 PER PERSON, PER HOUR  
BRING YOUR OWN TOOLS, MATERIALS  
AND PROJECTS TO WORK ON

PUBLIC BISQUE FIRING:  
FRI 16 MAY

PUBLIC GLAZE FIRING:  
FRI 23 MAY



## SAM DICKENSON

—  
DYNAMIC SURFACES  
WITH UNDERGLAZES  
DEMONSTRATION  
—

Introducing a new series of ceramic sessions from established artists and potters.

Join ceramic artist Sam in a hands-on demonstration exploring the dynamic possibilities of underglazes. She will showcase their approach to decorating a platter using paper stencils, wax resist, and sgraffito, revealing techniques to create depth, movement, and visual interest. Learn how layering color and texture can bring your surface designs to life.

WHEN FRI 23 MAY  
1 - 3PM

COST \$10

CLASS 8 MAX

ENROL STUDIOONE.ORG.NZ

PLEASE NOTE THIS IS A DEMONSTRATION,  
MATERIALS ARE NOT INCLUDED



## IULIA SIMTION

—  
KURINUKI WORKSHOP  
—

Introducing a new series of ceramic sessions from established artists and potters.

Kurinuki is a Japanese hand-building technique that involves carving a vessel from a solid block of clay. This approach allows for organic, textured forms and a direct connection to the material. In this workshop, participants will learn the fundamentals of kurinuki, including hollowing, shaping, and refining their pieces. Suitable for all skill levels, this session offers a hands-on exploration of form and surface through a slow, considered process. Firings and glazing are at a separate cost.

WHEN FRI 13 JUN  
1 - 3PM

COST \$10

CLASS 8 MAX

ENROL STUDIOONE.ORG.NZ

MATERIALS ARE INCLUDED





## SIRIPORN FALCON-GREY

### — TRINKET DISH —

This workshop will teach you how to make a trinket dish using the slab building. Finish off your one of a kind piece by creating your own individual markings and textures. Your trinket dish will be bisque & glaze fired and ready for pick up at a later date. Suitable for beginners & ages 8+.

WHEN    FRI 2 MAY  
          10 - 11.45AM

COST    \$75

CLASS   12 MAX

MATERIALS INCLUDED

ENROL [FALCONGREYCERAMICS.COM](http://FALCONGREYCERAMICS.COM)

## SIRIPORN FALCON-GREY

### — MAJESTIC MUG —

This workshop will teach you how to make a mug using the slab building technique. Have fun adding your own individual markings and textures to make your mug magnificent. Your mug will be bisque & glaze fired and ready for pick up at a later date. Suitable for beginners & ages 8+.

WHEN    FRI 16 MAY  
          10 - 11.45AM

COST    \$75

CLASS   12 MAX

MATERIALS INCLUDED

ENROL [FALCONGREYCERAMICS.COM](http://FALCONGREYCERAMICS.COM)



## SIRIPORN FALCON-GREY

### AUTUMN TEA LIGHT HOLDER

A relaxing workshop to learn how to create your own tea light holder for those moody winter nights. Using the slab building technique, experiment with textures and finishes to make your own custom design. Your tea light holder will be bisque & glaze fired and ready for pick up at a later date. Suitable for beginners & ages 8+.

WHEN FRI 30 MAY  
10 - 11.45AM

COST \$75

CLASS 12 MAX

MATERIALS INCLUDED

ENROL FALCONGREYCERAMICS.COM

## SIRIPORN FALCON-GREY

### SOUP BOWL

This workshop will teach you how to make a bowl by using the pinch pot technique. Finish off your one of a kind piece by creating your own individual markings and textures by carving into the clay. Your bowl will be bisque & glaze fired and ready for pick up at a later date. Suitable for beginners & ages 8+.

WHEN FRI 13 JUN  
10 - 11.45AM

COST \$75

CLASS 12 MAX

MATERIALS INCLUDED

ENROL FALCONGREYCERAMICS.COM



## SIRIPORN FALCON-GREY

### MATARIKI MUG

Create a mug to celebrate Matariki in this workshop! Using the slab building technique, finish off your one of a kind piece by creating your own individual markings and textures. Your mug will be bisque & glaze fired and ready for pick up at a later date. Suitable for beginners & ages 8+.

WHEN FRI 20 JUN  
10 - 11.45AM

COST \$75

CLASS 12 MAX

MATERIALS INCLUDED

ENROL [FALCONGREYCERAMICS.COM](http://FALCONGREYCERAMICS.COM)



## ADULT 208

### YOKO ONISHI

### KNOT YOUR ORDINARY JEWELRY: MACRAMÉ BRACELET & NECKLACE WORKSHOP

Join Yoko for a fun and interactive workshop where you'll create beautiful, handcrafted jewelry using simple micro macramé techniques! In this session, you can choose between two exciting projects: a "Wave Pattern Bracelet with Linen" or a "Boho Gem Macramé Bracelet/Necklace." Whether you're a complete beginner or experienced with macramé, this workshop is perfect for all skill levels. Bring your creativity and enthusiasm, and transform raw materials into stunning wearable art. No prior experience required – just a love for making and crafting!

WHEN SUN 25 MAY  
1 - 4PM

COST \$75

CLASS 6 MAX

MATERIALS INCLUDED

ENROL [STUDIOONE.ORG.NZ](http://STUDIOONE.ORG.NZ)



## BETH SERJEANT

## DROP-IN PRINT STUDIO

Come along and work independently in our printmaking studio. Studio One Toi Tū has three print presses available, including a large-scale printing press, and we want our community to utilise them.

Bring your own projects and work alongside like-minded creatives. Our longstanding printmaking tutor, Beth Serjeant will be able to provide technical advice and some limited materials will be available.

WHEN TUE, 10AM - 2PM

29 APR - 24 JUN

COST \$5 PER HOUR

BRING YOUR OWN TOOLS, MATERIALS, AND PROJECTS TO WORK ON

ENROL [STUDIOONE.ORG.NZ](http://STUDIOONE.ORG.NZ)



## ALVIN XIONG

## REALISTIC DRAWING &amp; PORTRAIT OIL PAINTING CLASS

Unleash your artistic potential as we delve into traditional drawing techniques. From outlines and shading to texture and perspective, we'll capture the likeness of reference photographs. Join us to refine your skills, unlock new horizons, and create stunning artworks that leave a lasting impression.

WHEN THU

12.30 - 3PM

STARTS 8 MAY

LENGTH 8 WEEKS

COST \$450

CLASS 10 MAX

ADDITIONAL MATERIALS LIST WILL BE PROVIDED ON ENROLMENT.

ENROL [STUDIOONE.ORG.NZ](http://STUDIOONE.ORG.NZ)



## MARK WHIPPY

—  
PORTRAIT DRAWING 101  
—

This course will introduce you to the head drawing methods taught by masters Frank Riley, Andrew Loomis and John Asaro. Through this you will learn how to see the head in shapes and planes for doing portrait paintings and drawings and learn how to accurately see proportions, where to place the features on a face. By the end you will be able to capture portraits with confidence, speed and efficiency. In the long term, using the charcoal pencil as a brush will also teach you how to paint when you move on to other mediums. This portrait drawing class occasionally includes live models for observation and practice.

WHEN TUE  
6.30 - 8PM

STARTS 29 APR  
LENGTH 8 WEEKS

COST \$260

CLASS 10 MAX

ADDITIONAL MATERIALS LIST WILL BE PROVIDED ON ENROLMENT

ENROL STUDIOONE.ORG.NZ



## MARK WHIPPY

—  
LIFE DRAWING 101  
—

This course will be an introduction into figure drawing where we will learn how to construct more realistic figures by learning about gesture, structure, and proportion. We will learn how to convey a sense of gesture to give flow and life to the figure and structure to give a sense of 3D form. We will also learn about how to construct a figure in proportion by finding key landmarks on the figure helping us to map the figure out. This class includes life drawing models for drawing practice.

WHEN WED  
6.30 - 8PM

STARTS 30 APR

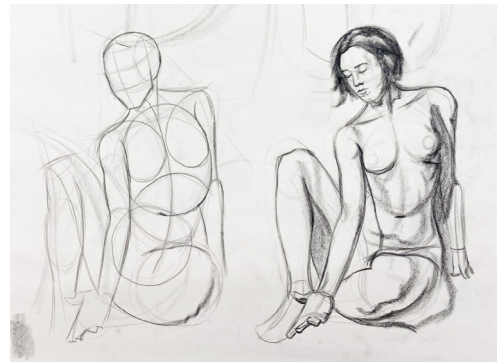
LENGTH 8 WEEKS

COST \$260

CLASS 10 MAX

ADDITIONAL MATERIALS LIST WILL BE PROVIDED ON ENROLMENT

ENROL STUDIOONE.ORG.NZ



# KIDS, TEENS & SCHOOL HOLIDAYS



## VAL ONG

—  
STEP INTO MIDDLE-EARTH!  
—

Enter the enchanting world of The Lord of the Rings, where mystical landscapes and legendary creatures come to life. In this exciting clay workshop, children will create iconic scenes inspired by Tolkien's epic tales. From the rolling hills of the Shire to the towering peaks of Mordor, they'll sculpt detailed landscapes and bring heroic characters to life in clay. Kids will learn sculpting techniques to create their elves, hobbits, wizards, and more. With plenty of fun and imagination shared in the class, every piece will be glaze-fired and ready to treasure!

AGE 5 - 11  
WHEN WED 16 & THU 17 APR  
10AM - 2PM  
COST \$185  
ENROL [STUDIOONE.ORG.NZ](http://STUDIOONE.ORG.NZ)



## VAL ONG

—  
SPIN, SHAPE, AND SPLASH  
—

Join us for an exciting Easter workshop where creativity takes centre stage! Kids will design and create a bold, vibrant crockery set. From playful patterns to fun textures, each piece will come to life with colourful designs and fun details- imagine a frog dangling from the edge of a bowl, or a cat peeking over a plate's rim. Kids will explore the magic of the pottery wheel and hand-building to create their masterpieces. Once completed, every piece will be glaze-fired and ready to become a beautiful and functional part of your family's meals at a later date.

AGE 5 - 11  
WHEN WED 23 & THU 24 APR  
10AM - 2PM  
COST \$185  
ENROL [STUDIOONE.ORG.NZ](http://STUDIOONE.ORG.NZ)



VAL O N G

FUTURE POTTERS CLUB

Ignite your child's creativity and let them discover the wonders of clay with Future Potters Club! In our weekly hands-on classes, your child will create imaginative creatures to scenes from a movie. Designed to spark imagination, our classes offer a chance to make one-of-a-kind pottery while developing artistic skills. Join us today!

AGE 6 - 12  
WHEN TUE, 4 - 5.30PM  
STARTS 29 APR  
LENGTH 6 WEEKS  
COST \$185  
CLASS 12 MAX  
MATERIALS INCLUDED  
ENROL [STUDIOONE.ORG.NZ](http://STUDIOONE.ORG.NZ)

CREATIVE MATTERS

Creative Matters holiday art workshops are educational with a focus on a rich development of the creative process, encouraging individual creativity and artistic interpretation as well as time to explore and experiment with ideas and visual arts techniques. We believe in the benefits of vertical age grouping and cater for the individual needs and developmental stages of each child. Keep an eye on [www.creativematters.co.nz](http://www.creativematters.co.nz) to see dates and themes.

APR SCHOOL HOLIDAY SESSIONS  
TUE 15, WED 16, THU 17  
TUE 22, WED 23, THU 24  
[CREATIVEMATTERS.CO.NZ](http://CREATIVEMATTERS.CO.NZ)





## TANJA NOLA

CASUAL DROP-IN  
ART SESSION

The Casual Drop-In Art Making Group invites school leavers 17+ to immerse themselves in a relaxed and friendly environment that includes on-site galleries, studios, art classes and communal outdoor space. Whether you join us for an hour or stay for four – it's all about what suits you best. In the dedicated sculpture and making studio there will be an opportunity to explore your own interests with clay sculpting, drawing or painting. Experienced artist, and tutor Tanja Nola will be available to guide your ideas providing insights and techniques to help you. No need to book, just drop in and enjoy some art making time with others.

AGE YOUNG ADULTS 17+  
WHEN SAT 3 MAY  
SAT 7 JUN  
SAT 5 JUL  
2 - 6PM  
COST FREE  
ENROL STUDIOONE.ORG.NZ



## TANJA NOLA

## TEEN ARTWORK

In a fully equipped art studio, students work progressively to develop their own visual language. Experienced artist and tutor, Tanja, supports students and encourages research and exploration into art history, music, and popular culture. Directed by individual needs, students discover their creative potential and build confidence in their art practice. This course is ideal for teens at all skill levels and is a great bridge for those considering further education in the arts. This is a shortened course and will include drawing, painting, and ceramic exploration.

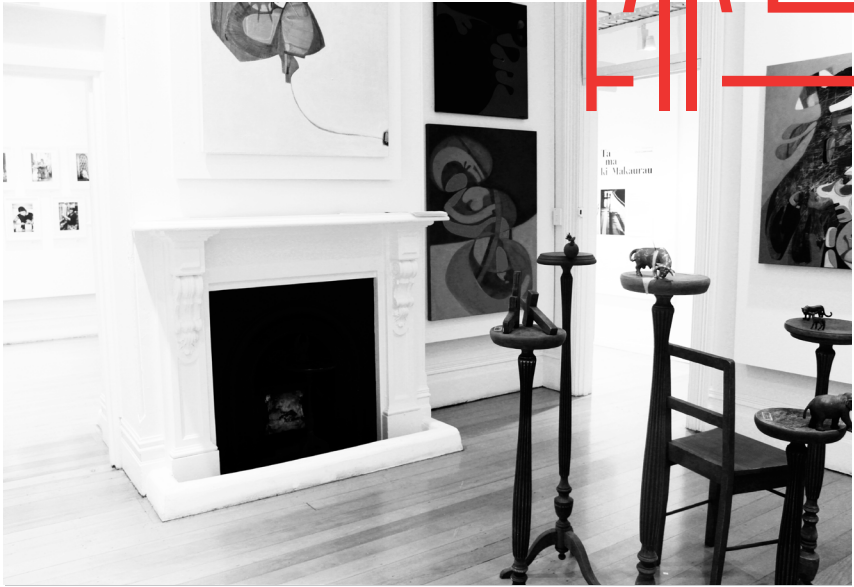
AGE 13 - 17  
WHEN THU, 4 - 6PM  
STARTS 15 MAY  
LENGTH 7 WEEKS  
COST \$395  
CLASS 8 MAX  
MATERIALS INCLUDED  
ENROL STUDIOONE.ORG.NZ



# HI RE







## CALL FOR PROPOSALS

### — EXHIBITIONS

Proposals for our four ground floor galleries are accepted annually via an online application process. The next call for proposals will open in June 2018 for exhibitions in 2019.

## GALLERIES

—  
We have an impressive selection of exhibitions in our four gallery spaces programmed throughout the year. Bookings for the galleries can be made by submitting an exhibition proposal. Contact us for more information about our galleries and keep up to date with our current exhibitions at [Facebook.com/StudioOneToiTu](https://www.facebook.com/StudioOneToiTu).



## BOOK ONLINE

—

## VENUE HIRE

—

To find out how we can support you, visit our online bookings page at [bookings.aucklandcouncil.govt.nz/facility/studio-one-toi-tu](https://bookings.aucklandcouncil.govt.nz/facility/studio-one-toi-tu)

## ROOMS AND EVENT SPACE

—

Studio One Toi Tū has a variety of adaptable indoor and outdoor spaces to meet your needs, bring your idea to life and open your event to the community. Whether you're a designer looking for a space to show your latest collection, a book group seeking a central meeting place, or if you are looking for something more exciting we have the space for you.

## VENUE HIRE

We offer a range of room hire options available at an hourly rate. Come in to view and discuss how we can assist you to find a space that suits your needs, we are always happy to show you around. To book a space please visit [booking.aucklandcouncil.govt.nz/facilities](http://booking.aucklandcouncil.govt.nz/facilities).

### MEETING AND EVENT SPACE

Studio One Toi Tū has a variety of adaptable indoor and outdoor spaces to meet your needs, bring your idea to life and open your event to the community. Whether you're a designer looking for a space to show your latest collection, a book group seeking a central meeting place, or if you are looking for something more exciting we have the space for you. To find out how we can support you, visit or call us on 09 376 3221.

### HIRE RATES

We have a range of room hire options available at an hourly rate\*. Come in to view and discuss how we can assist you to find a space that suits your needs, we are always happy to show you around.

\* A community rates discount is available by application

## SPACES FOR HIRE

### ROOM 5

—  
A versatile meeting, workshop and function room with heating and air conditioning.

### ROOM 6

—  
A sunny versatile meeting, workshop and function room with views onto the rear deck.

### ROOM 10

—  
A large clean studio with options. It can be hired as a shared studio with up to 12 desks, a rehearsal room, for conferences, seminars, workshops, pop-up exhibitions, film screenings, book launches and more. This space can be booked hourly or weekly with possibilities to hire additional rooms as break-out space.

### ROOM 11

—  
Our dedicated art workshop with print press, tables, stools, chairs, easels and spot lights. This space is set up to accommodate painting and visual art practices and can be hired in its entirety at our hourly, daily or half daily rate.

### ROOM 12

—  
Dedicated art workshop set up to accommodate sculpture practices. This workshop can be hired in its entirety at an hourly, daily or half daily rate.



# STUDIO ONE — TOITŪ

## OPENING HOURS

—

### All spaces

Mon - Fri	10am - 6pm
Sat	10am - 4pm
Sun	Closed

—

### Residents

24/7 access

## ACCESS

—

All rooms and galleries  
are wheelchair accessible.

## LOCATION

—

1 Ponsonby Road,  
Auckland, New Zealand

## CONTACT

—

09 376 3221  
info@studioone.org.nz  
studioone.org.nz

facebook.com/studioonetoitu  
instagram.com/StudioOne.ToiTu

#VisitCreateMake  
#HirePlayShow  
#StudioOneToiTu